



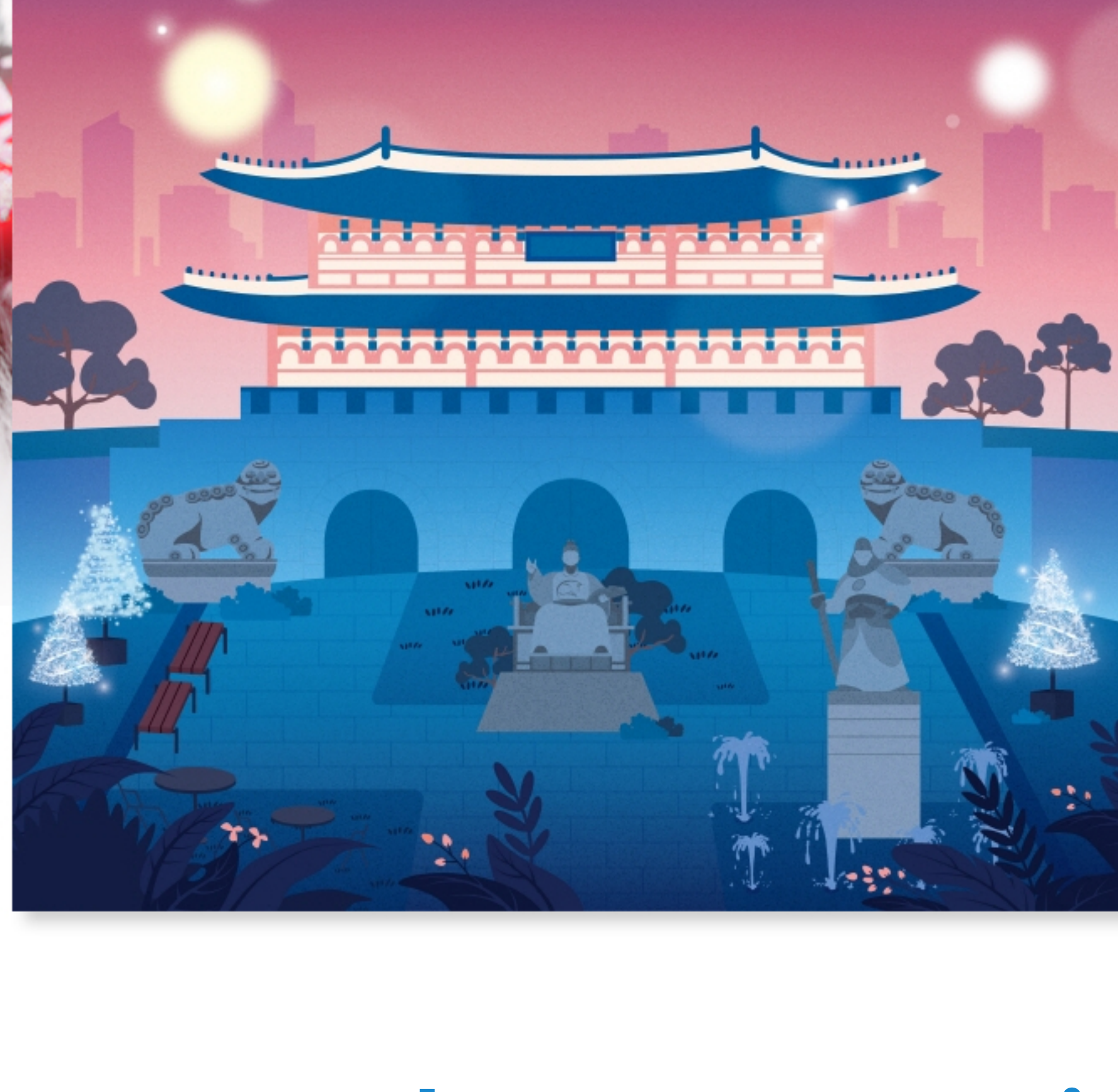
## December Edition

## Brighten Up Your Winter With Lanterns!

December is the month of Christmas and a myriad of end-of-the-year festivities. Come December, landmarks around Seoul are transformed by beautiful and illuminating decorations, creating a romantic feel throughout the city. There are also festivals held throughout every corner of Seoul that celebrate the theme of “light,” brightening up the cold winter days.

One of the most well-known is the Seoul Lantern Festival, which usually lights up Cheonggyecheon Stream at the end of every year. This year, the festival is taking place at Gwanghwamun Square to commemorate the reopening of the renovated square.

In this December edition, learn more about the 2022 Seoul Lantern Festival and other attractions, decked with lights, that will surely bring you some Christmas cheer.



## 2022 Seoul Lantern Festival



The Seoul Lantern Festival, which was first held in 2009 in commemoration of “Visit Korea Year,” has been lighting up Cheonggyecheon Stream for the past 13 years. The most well-known nighttime festival in Seoul, the festival is popular for its LED lights, media art, and other beautiful and colorful light sculptures that brighten up the winter. Of all the decorations on display the “hanji lanterns,” which are made with a special type of Korean traditional paper called “hanji,” are a major attraction. Artisans make the lanterns by hand, meticulously applying layers of hanji, one on top of the other. The gentle light from inside the lantern spreads out gracefully through the traditional paper to create dazzling works of art. Every year, an average of 2 million visitors come to Cheonggyecheon to enjoy the Seoul Lantern Festival. Now that COVID-19 social distancing measures have finally been lifted, the festival is back, welcoming visitors to the renovated Gwanghwamun Square for the holidays. Exquisite lights expected to fill the square will surely soothe your mind and soul.

## “A square of lights to enjoy together”

## Event Overview

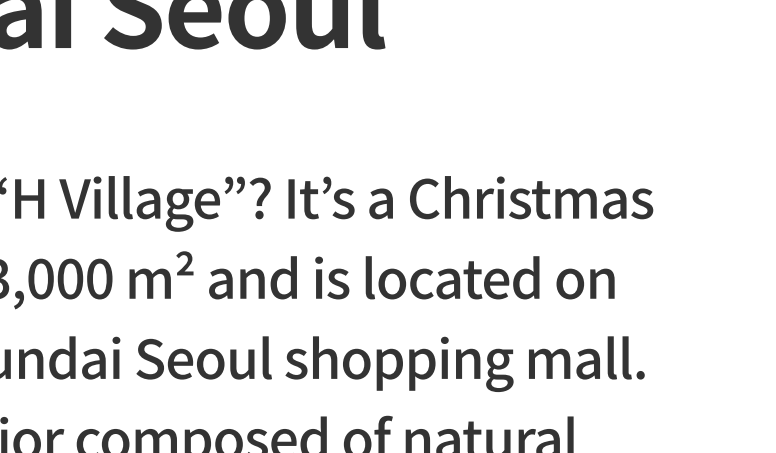
- Event period: December 19 (Mon)–31 (Sat), 2022
- Hours: 18:00–22:00
- Location: Gwanghwamun Square
- Type: Light sculpture display



## A word from the Seoul Tourism Organization!

The end of 2022 is already upon us. As we walk around the brightly-lit streets of the city in December, we can’t help but feel the regret of the passing of another year, but our hearts are also filled with expectations for the new year. As we bring the year to a close, we look forward to the Seoul Lantern Festival, a festival that millions of people flock to every year. What will the newly renovated Gwanghwamun Square look like under all of the dazzling lights? Don’t miss out on visiting the 2022 Seoul Lantern Festival with your loved ones! We highly anticipate that this special event, full of lanterns lighting up the streets of Seoul, will be a meaningful symbol of hope for all festival goers.

## Romantic Seoul Attractions Full of Lights!



## The Hyundai Seoul

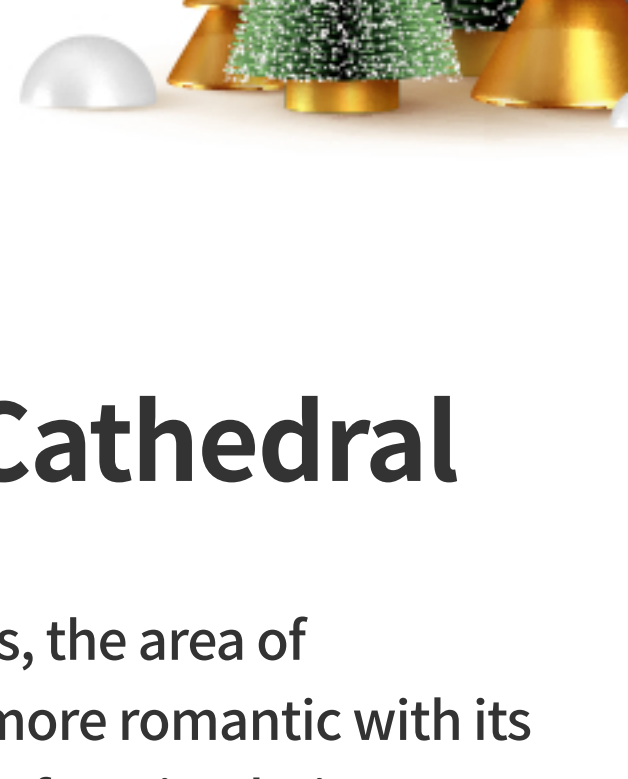
Have you heard of the “H Village”? It’s a Christmas village with an area of 3,000 m<sup>2</sup> and is located on the 5th floor of The Hyundai Seoul shopping mall. It boasts a unique interior composed of natural lights and gardens with which you can celebrate the upcoming holidays. The village’s Christmas trees, 120 other trees, 11 cottages, and more than 6,000 lights make you feel as if you’ve entered a village found only in fairytales. The Hyundai Seoul will also conduct a special show, using the lights around the venue accompanied by Christmas music, three times a day.

- Address: 108, Yeoui-daero, Yeongdeungpo-gu, Seoul (The Hyundai Seoul)
- Directions: Walk 5 minutes from Exit 1 of Yeouinaru Station on Subway Line 5
- Hours: Monday–Sunday, 10:30–20:00
- Hours for restaurants on the 6th floor: 10:30–22:00

## Shinsegae Department Store (Main Store)

The Main Store of Shinsegae Department Store—located in the Myeongdong commercial district, a hot spot especially at the end of the year—was the center of attention last year when it displayed a mega media façade called “Magic Holidays” on the exterior of the department store building. Despite the COVID pandemic, the display attracted countless visitors, who helped spread the word by sharing the display through social media. This year, Shinsegae is preparing visual merchandising (VM), which takes advantage of the building’s exterior walls and show windows. Since this year will be the first time since the outbreak of the pandemic that year-end festivities will be free from social distancing and outdoor masking, Shinsegae has put a tremendous amount of effort into its upcoming display to attract even more visitors. Nearby hotels have already been flooded with reservation inquiries from people who want to enjoy the so-called “Shinsegae View.” Make sure to make a visit before the end of the year to view Shinsegae’s special visual merchandising.

- Address: 63, Sogong-ro, Jung-gu, Seoul (Shinsegae Main Store)
- Directions: Walk 2 minutes from Exit 7 of Hoehyeon Station on Subway Line 4
- Hours: 10:30–20:00 daily (10:30–20:30 on Fridays, Saturdays and Sundays)



## Myeongdong Cathedral

During the Christmas holidays, the area of Myeongdong becomes even more romantic with its bright lights and is definitely a favorite dating spot for couples. As Christmas draws near, Myeongdong Cathedral, a well-known landmark in the area, is decked out in LED flowers and an array of glittery lights, making you feel as if you have been transported to a cathedral in Europe.

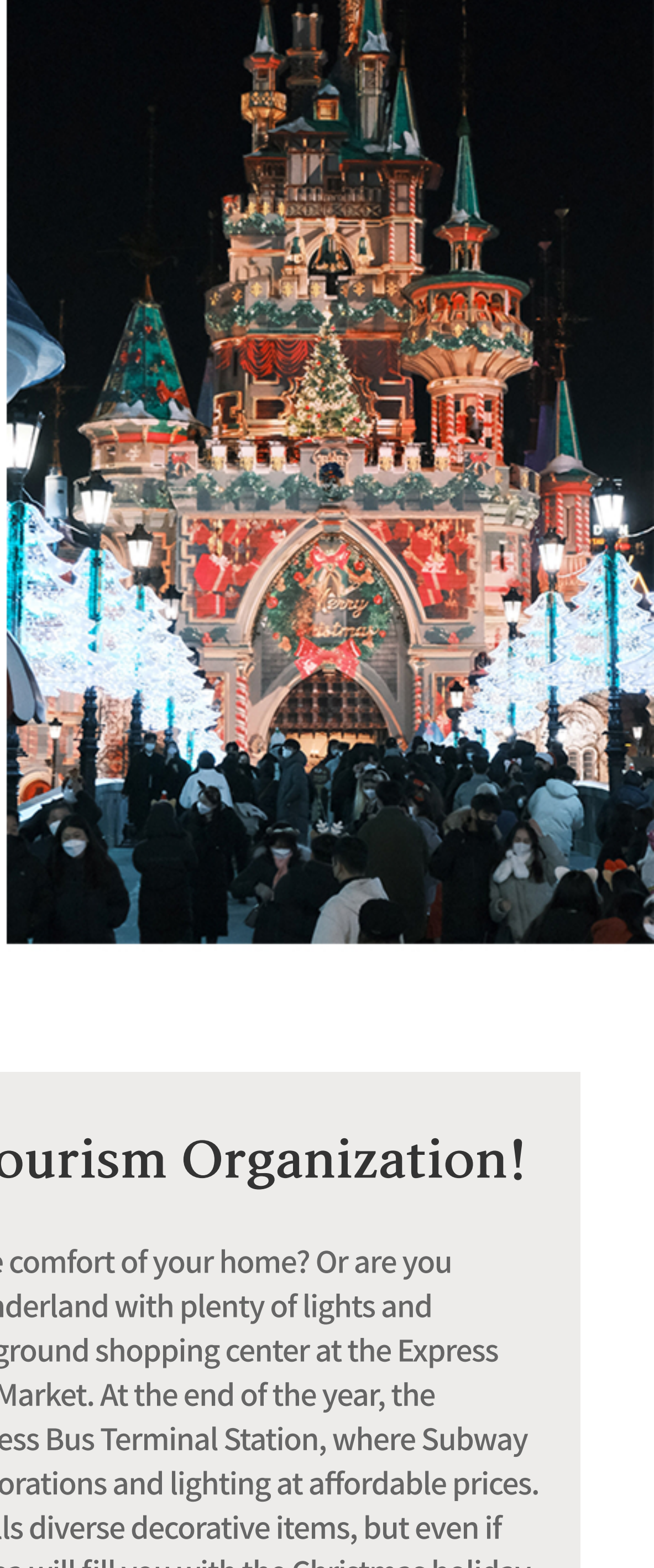
The Myeongdong Cathedral also hosts a Christmas market, festooned with plenty of decorations, gifting visitors to the Myeongdong area with even more things to see and do. Among the cathedral’s attractions during the holiday season are a Christmas tree topped with flowers of hope and a nativity scene with Baby Jesus and the Three Wise Men. The Christmas market is filled with candles and decorative items—all of which make the cathedral the perfect place to visit during the holidays and boost your Christmas spirit.

- Address: 74, Myeongdong-gil, Jung-gu, Seoul
- Directions: Walk 5 minutes from Exit 10 of Myeongdong Station on Subway Line 4
- Hours: 10:00–19:00 daily

## Lotte World

At Lotte World you can enjoy a Christmas parade complete with a Santa Claus, who seems like he’s come straight from the North Pole to sing and dance and shower people with Christmas cheers. Lotte World is one of the most popular places to visit during the Christmas season and boasts plenty of fun things to see and enjoy, including the Christmas Special Parade and the Miracle Winter Magic Castle. After nightfall, take part in the Magic Castle Lights Up event to take memorable pictures against the backdrop of the castle’s falling snow. If you’re hoping for a fairytale Christmas, Lotte World is the place to be.

- Address: 240, Olympic-ro, Songpa-gu, Seoul
- Directions: Use Exit 4 of Jamsil Station on Subway Line 5 or take the underground passage
- Hours: 10:00–21:00 daily (10:00–22:00 on Fridays, Saturdays and Sundays)



## A word from the Seoul Tourism Organization!

Do you prefer to revel in the Christmas spirit from the comfort of your home? Or are you hoping to transform your home into a Christmas wonderland with plenty of lights and decorations? If so, we recommend visiting the underground shopping center at the Express Bus Terminal Station and the Gyeongbu Line Flower Market. At the end of the year, the Gangnam Underground Shopping Center at the Express Bus Terminal Station, where Subway Lines 3, 7, and 9 intersect, has plenty of beautiful decorations and lighting at affordable prices. The Gyeongbu Line Flower Market located nearby sells diverse decorative items, but even if you’re not looking to buy, just walking around the area will fill you with the Christmas holiday spirit. Why don’t you take a look around and see what you can find to make your end-of-the-year celebrations even more fun?

## Goto Mall

Address: 200, Sinbanpo-ro, Seocho-gu, Seoul  
Directions: Use the underground passage of Express Bus Terminal Station on Subway Lines 3, 7 and 9  
Hours: 10:00–22:00 daily

## Flower Market (3F, Gangnam Express Bus Terminal, Gyeongbu Line)

Address: 195, Sinbanpo-ro, Seocho-gu, Seoul  
Directions: Walk 1 minute from Exit 1 of Express Bus Terminal Station on Subway Lines 3, 7 and 9  
Live flowers: 23:30–12:00  
Artificial flowers: 24:00–18:00

